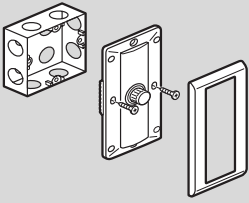


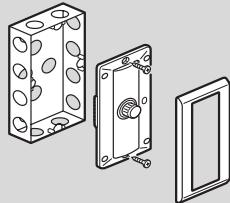
Belanko™

dimmers and ventilation control

Fixing in 1 or 2 gang boxes - Dimmer Cat.No 6 170 32 - 1500 W

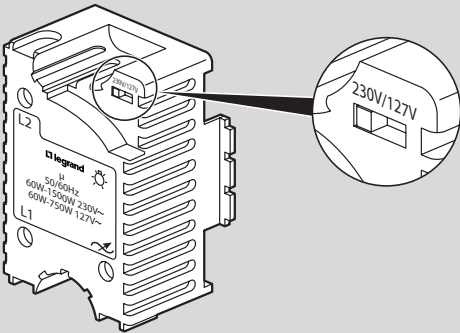


Preparation with 1-gang box



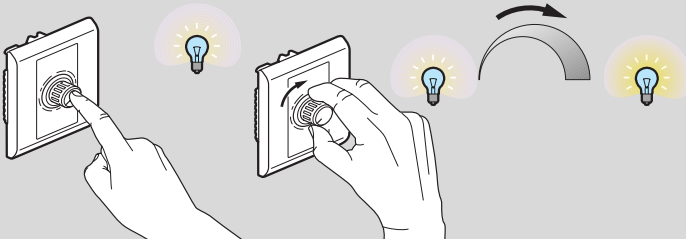
Preparation with 2-gang box

Choose your electricity network voltage - Dimmers Cat.Nos 6 170 31/32



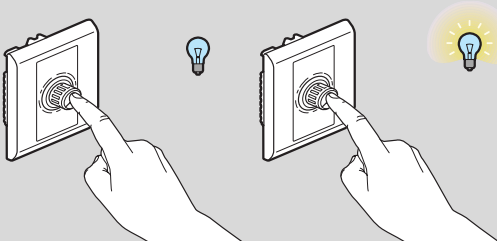
Choose your brightness adjustment - Dimmers Cat.Nos 6 170 31/32/35 - 1000 W / 1500 W / LED

Push ON/OFF and rotary dimming



Push to turn ON

Rotate for brightness adjustment

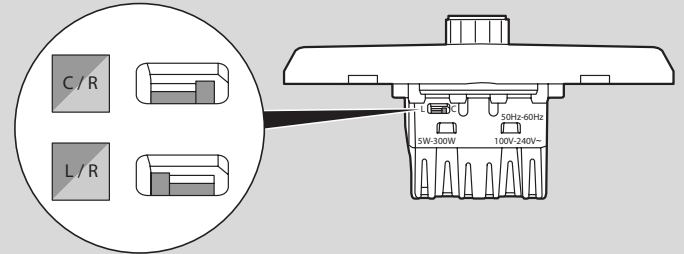


Push to turn OFF
When pushed OFF, the dimmer memorizes the light level for the next switching ON

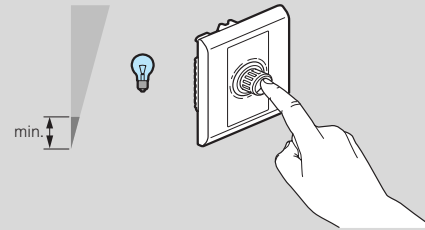
Push ON
The light level will be restored as previously memorized

Because LED and CFL dimming is complex, some settings are available on LED dimmer 6 170 35 :

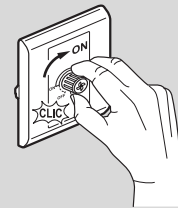
Trailing edge (C/R) or leading edge (L/R) behavior depending on the lamps



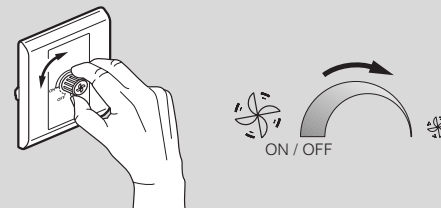
Minimum lighting level if lamp flickers



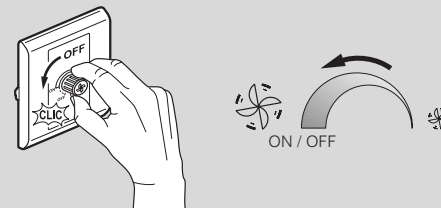
Ventilation control Cat.No 6 170 33



Rotate to turn ON
When turned ON the fan control works at full capacity. This ensures that the whole ventilation system - fan included - is effectively ON



Rotate to reduce the speed



Rotate to turn OFF
Going back to full capacity before turning OFF ensures that the whole ventilation system - and not only the fan - will be effectively switched OFF