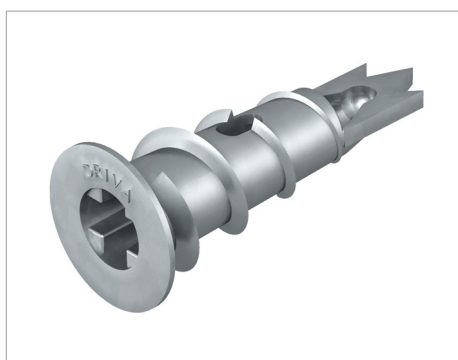
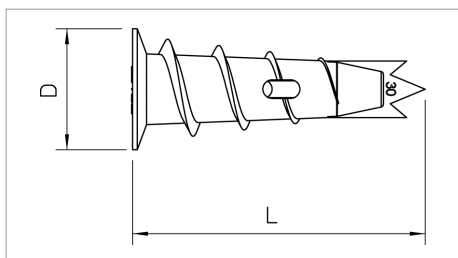


Technical data sheet Plasterboard anchor



To fasten components to plasterboard or fibre composite plates.
Minimum plate thickness: 12 mm for Ø 4.5 Golden Sprint or Sprint screws.




Type	Dimension D mm	Dimension L mm	For screw diameter Ø	Permitted load range, tension zone kN	Pack. pcs	Weight kg/100 pcs.	Art.-No.
910 GKDM 12x30	12	30	4.5	0.04	100	0.400	3483214

Zn Die-cast zinc

E /100 pc.



Legend

 Communautés Européennes, EC declaration of conformity according to EC directives